

# Volume 2 - LVIA PHOTOMONTAGES

Volume 2d - Sceirde Rocks Onshore Compensation Compound (OCC)

This book contains imagery for the  
viewpoints chosen for the LVIA study

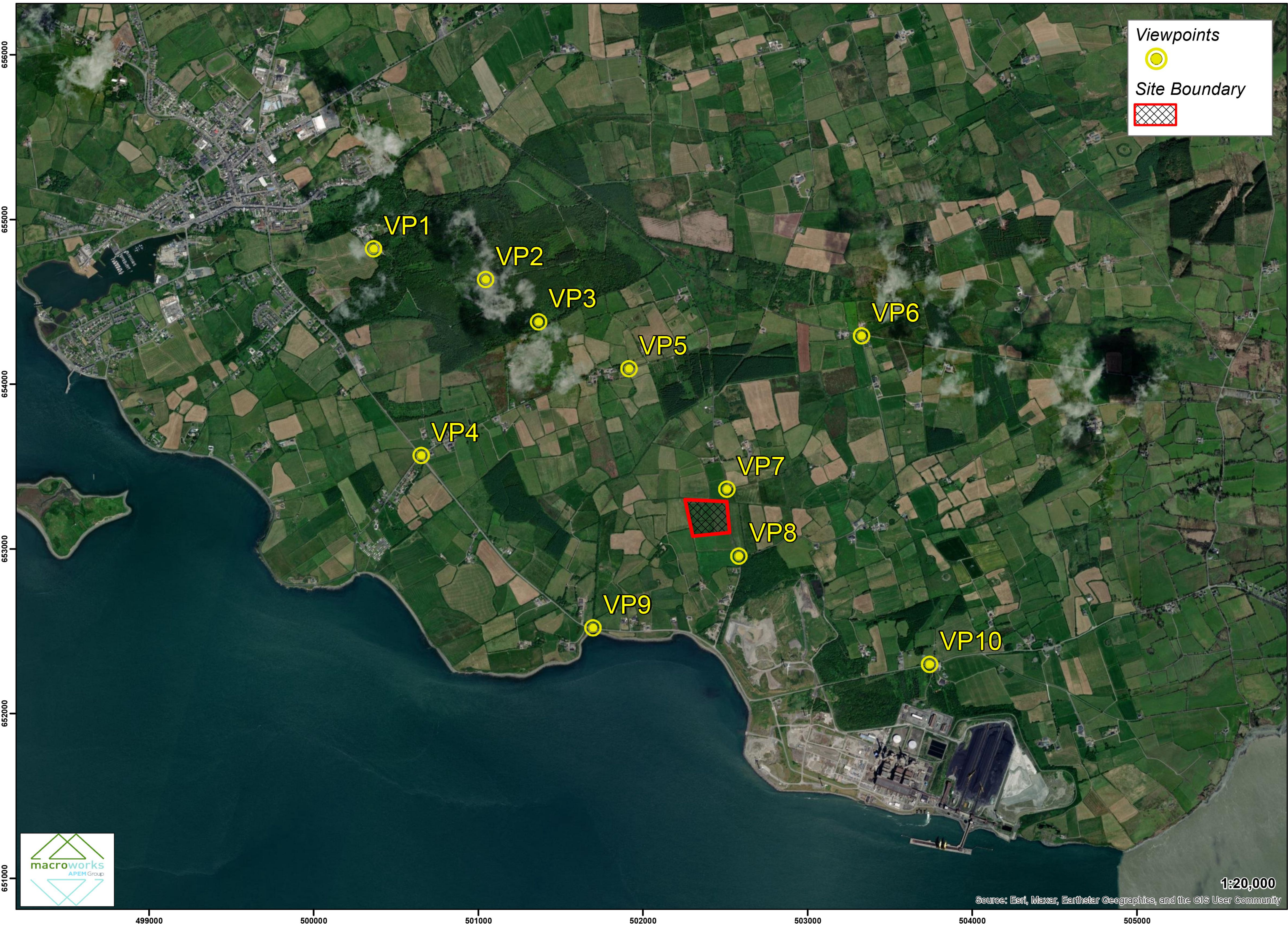
December 2024



INDEX

Viewpoint 1 - Existing View*	Viewpoint 6 - Existing View + Outline View*	Viewpoint 10 - Existing View + Outline View*
Viewpoint 2 - Existing View*	Viewpoint 7 - Existing View + Outline View	*NB - There is no Outline, Montage or Mitigated Montage View for this viewpoint as the proposed development is completely screened by terrain
Viewpoint 3 - Existing View + Outline View*	Viewpoint 7 - Montage View + Mitigated View	
Viewpoint 4 - Existing View + Outline View*	Viewpoint 8 - Existing View + Outline View	**NB - There is no Montage or Mitigated Montage View for this viewpoint as the proposed development is completely screened by existing vegetation
Viewpoint 5 - Existing View + Outline View	Viewpoint 8 - Montage View + Mitigated View	
Viewpoint 5 - Montage View + Mitigated View	Viewpoint 9 - Existing View + Outline View*	

LVIA viewpoint locations selected for the Sceirde Rocks Onshore Compensation Compound (OCC) project







Please Note: There is no Outline, Montage or Mitigated Montage view for this viewpoint as the proposed development is completely screened by terrain.

These are 80° panoramic montages captured and presented in accordance with the guidance set by the British Landscape Institute 2011 - Advice Note 01/11.

To view these panoramas on a flat surface one must move from left to right along its length whilst maintaining a perpendicular viewing direction and the specified correct viewing distance of 30cm. To see this entire panoramic scene in reality would necessitate turning one's head through 40°.

Easting (ITM):	500363	Lens:	50mm / Full Frame Sensor	Date:	2024/02/16
Northing (ITM):	654823	Camera:	Canon 1-D Mark II digital SLR	Time:	15:30
Direction of View	135° E of Grid North	Camera Height:	1.7m Above Ground Level	Distance to Site:	2.4km
Angle of View:	80°				







Please Note: There is no Outline, Montage or Mitigated Montage view for this viewpoint as the proposed development is completely screened by terrain.

These are 80° panoramic montages captured and presented in accordance with the guidance set by the British Landscape Institute 2011 - Advice Note 01/11.

To view these panoramas on a flat surface one must move from left to right along its length whilst maintaining a perpendicular viewing direction and the specified correct viewing distance of 30cm. To see this entire panoramic scene in reality would necessitate turning one's head through 40°.

Easting (ITM):	502583	Lens:	50mm / Full Frame Sensor	Date:	2024/02/16
Northing (ITM):	652957	Camera:	Canon 1-D Mark II digital SLR	Time:	13:31
Direction of View	138° E of Grid North	Camera Height:	1.7m Above Ground Level	Distance to Site:	1.8km
Angle of View:	80°				





Existing View



Outline View  
indicating physical position and scale of the  
proposed development irrespective of screening



These are 80° panoramic montages captured and presented in accordance with the guidance set by the British Landscape Institute 2011 - Advice Note 01/11.

To view these panoramas on a flat surface one must move from left to right along its length whilst maintaining a perpendicular viewing direction and the specified correct viewing distance of 30cm. To see this entire panoramic scene in reality would necessitate turning one's head through 40°.

Easting (ITM):	501365	Lens:	50mm / Full Frame Sensor	Date:	2024/02/16
Northing (ITM):	654380	Camera:	Canon 1-D Mark II digital SLR	Time:	16:07
Direction of View	141° E of Grid North	Camera Height:	1.7m Above Ground Level	Distance to Site:	1.4km
Angle of View:	80°				

